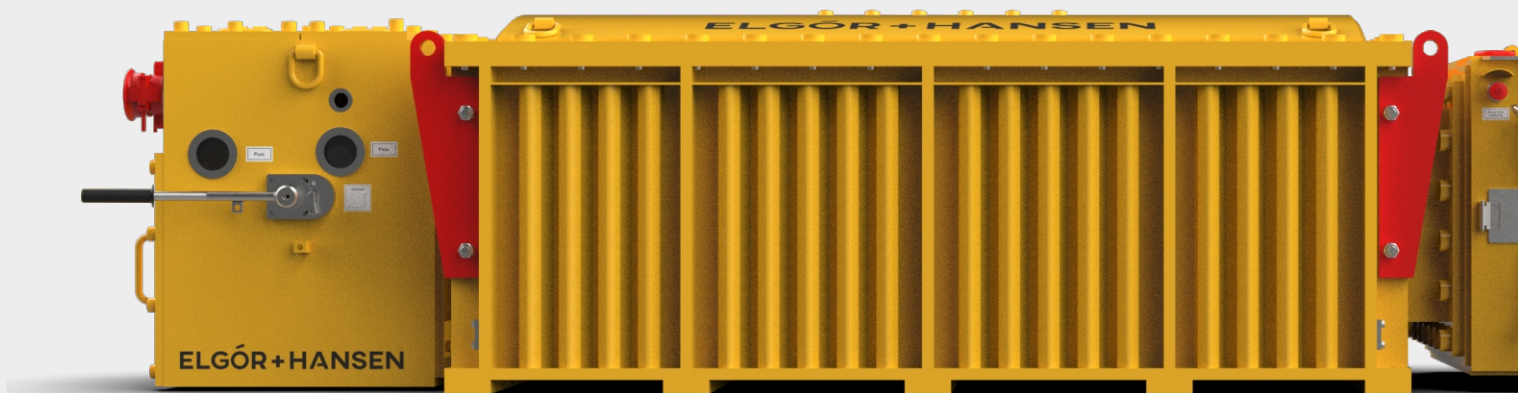


POWER AND MANOEUVRING EQUIPMENT

POWER SUPPLY AND MANEUVERING DEVICE EH-d32/d13



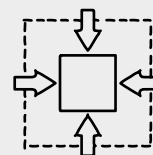
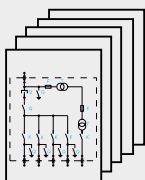
KEY FEATURES:

↳ 2014/34/UE
(ATEX)

↳ compact design

↳ remote/local control

↳ low housing



POWER AND MANOEUVRING EQUIPMENT

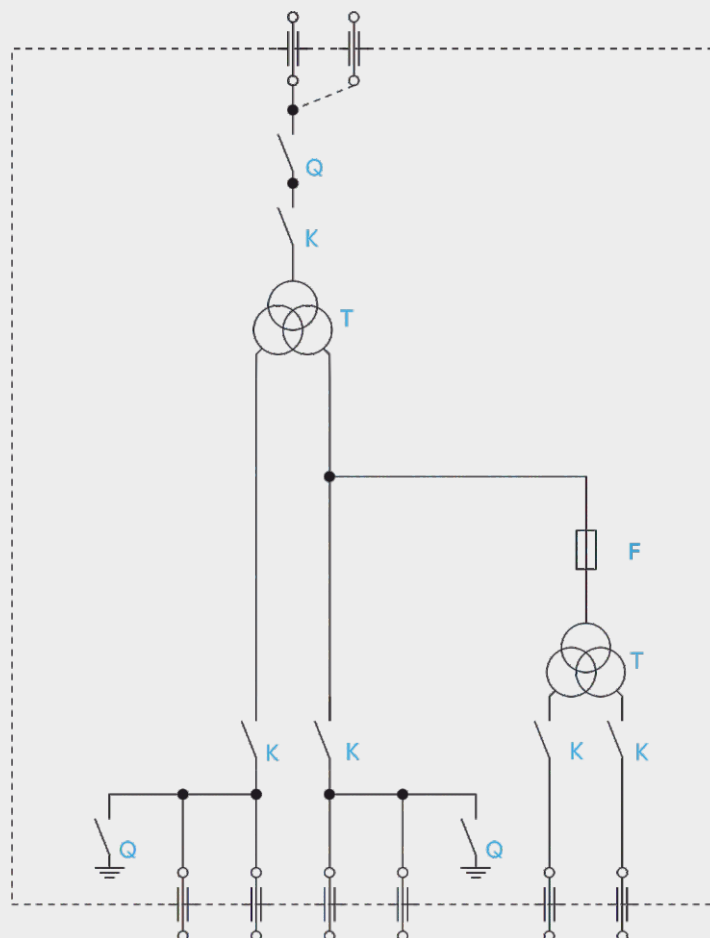
POWER SUPPLY AND MANEUVERING DEVICE EH-d32/d13

PRODUCT CHARACTERISTICS

The power supply and control device for voltages up to 6.6 kV is an electrical device designed to supply power, connect, and control electric drives of mining machines and equipment, including those using a soft start process. The device can be installed in underground workings of non-methane and methane mines. The design of the device has been developed in accordance with the requirements of Directive 2014/34/EU (ATEX).

The electrical safety measures used and the control and cooperation system with technological interlocks using intrinsically safe circuits allow for safe cooperation with mining machine power supply devices. The device is adapted for connection to a data transmission system enabling the reading of technological information and its transmission to the surface of the mine (e.g. to the dispatcher).

CONFIGURATION DIAGRAM



POWER AND MANOEUVRING EQUIPMENT

POWER SUPPLY AND MANEUVERING DEVICE EH-d32/d13

TECHNICAL DATA

up to 1030 kVA

rated power

up to 6600 V

rated primary voltage

up to 1200 V

rated secondary voltage

50/60Hz

frequency

up to 2

number of disconnecting
tracks

up to 600 A

rated continuous current
of the disconnecting circuit

*

number of three-phase
main outlets

*

number of three-phase
auxiliary outlets up to
230V

*

number of single-phase
auxiliary outlets up to 230V

up to 600 A

rated current of a
single main outlet

up to 8000 kg

weight

*

depending on configuration

POWER AND MANOEUVRING EQUIPMENT

POWER SUPPLY AND MANEUVERING DEVICE EH-d32/d13

APPEARANCE, DIMENSIONS AND DESCRIPTION

