



CONTACTOR SWITCHGEARS AND THYRISTOR SOFT-STARTERS

rated current 500A

TECHNICAL DATA

Type	EH-KK A2	EH-KK A3	EH-KK A4	EH-KK A4	EH-KK...
Rated insulation voltage	1200V	1200V	1200V	1200V	1200V
Rated contact voltage	1000V or 500V	1000V or 500V	1000V or 500V	1000V or 500V	up to 1100V AC
Frequency	50Hz	50Hz	50Hz	50Hz	50Hz/60Hz
Rated continuous current	500A	500A	500A	500A	total 500A power lines of disconnecter 500A of a single output 500A
Max continuous current of a single output:					up to 440A
output 1	up to 1400A	up to 1400A	up to 1400A	up to 1200A	up to 1400A
output 2	up to 1400A	up to 1400A	up to 1400A	up to 1200A	up to 1400A
output 3		up to 1400A	up to 150 A	up to 1200A	up to 1400A
output 4		up to 1400A	up to 150A	up to 1200A	up to 1400A
Number of outputs	2	4	4	4	2
Voltage of aux circuits	42V, 220V	220V	42V, 220V	220V	230V
Short-circuit switching ability	25kA, $\cos\phi = 0,25$	25kA, $\cos\phi = 0,25$	25kA, $\cos\phi = 0,25$	25kA, $\cos\phi = 0,25$	25kA
Leakage protection blocking resistance	50k Ω (1000V),	50k Ω (1000V),	50k Ω (1000V),	50k Ω (1000V),	(depending on the used connection equipment)
leakage protection	25k Ω (500V)	25k Ω (500V)	25k Ω (500V)	25k Ω (500V)	50k Ω

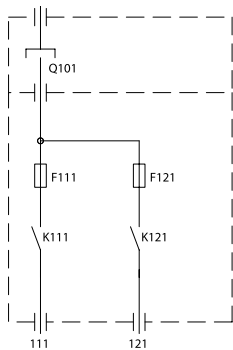
CHARACTERISTICS

Contactors and starters are anti-explosion devices and can be installed in underground headings of mining factories, methane-free or methane ones with methane hazard grade: "a", "b", "c" and in headings with "A" & "B" class of coal-dust explosion

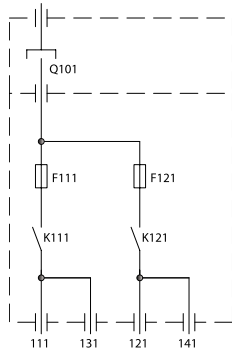
hazard. Applied electric-power protections and adopted system of control & co-operation with technological interlocks using spark-safe circuits ensure safe co-operation with supplied mining devices and/or machines.

Exemplary configurations

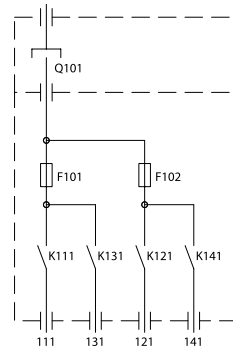
EH-KK A2



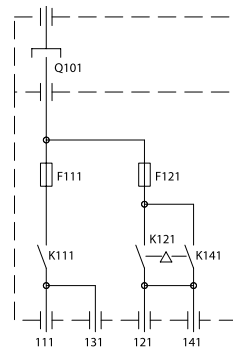
EH-KK A3



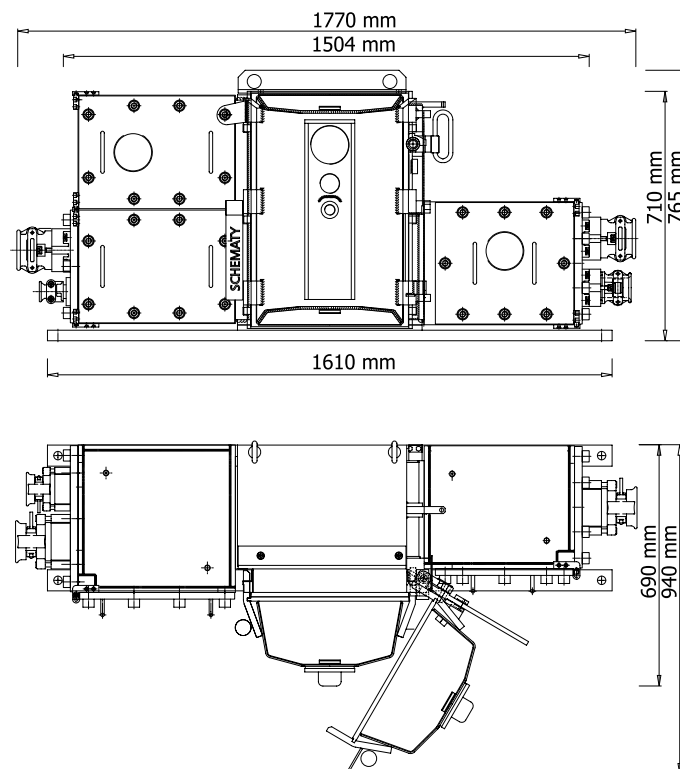
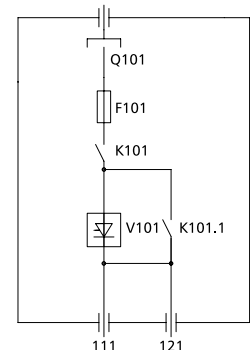
EH-KK A4



EH-KK A5



EH-KK A1



FAMUR
ELGÓR+HANSEN

— Safety and Power

ul. Opolska 19, 41-500 Chorzów
tel. +48 32 249 94 80, tel./fax +48 32 241 34 57
www.elgorhansen.com