



MULTI-OUTPUT COMPACT STATIONS AND THYRISTOR SOFT-STARTERS

rated current 1800A

TECHNICAL DATA

Type:	EH-d03-W...	EH-d03-R..
Rated insulation voltage	up to 1100V	up to 1100V
Frequency	50Hz/60Hz	50Hz/60Hz
Rated continuous current	up to 1800A	up to 1800A
Rated current of the switching-off line	up to 600A	up to 600A
Rated continuous current of outflows	up to 600A	up to 600A
Number of three-phase main circuit out-puts (protected)	configurations (max 12)	configurations
Number of three-phase 230V max. circuit outputs (protected)	configurations configurations (max 8)	configurations
Number of one-phase 230V max. circuit outputs (protected)	configurations (max6)	configurations
Auxiliary circuit voltages	42V, 220V	42V, 220V
Short-circuit connection ability	25kA, $\cos\phi = 0,25$	25 kA, $\cos\phi = 0,25$
Weight to ~	up to ~2400kg	up to ~2400kg

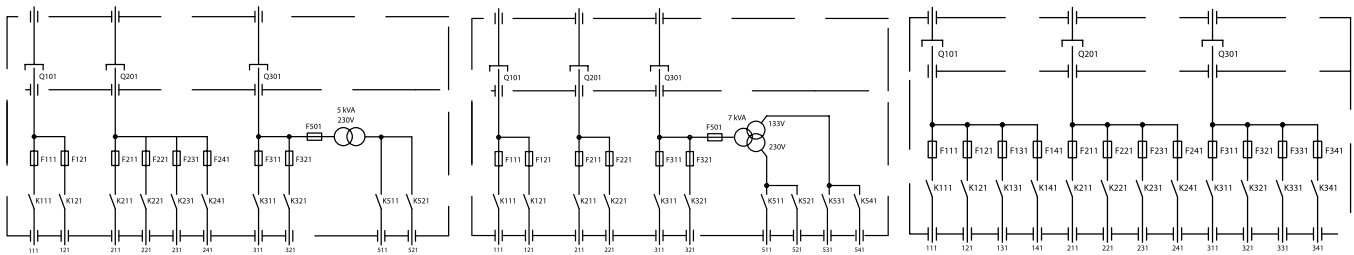
CHARACTERISTICS

Devices are the anti-explosion version devices and according to the Polish executive rules of the Geological & Mining Law may be installed inside underground excavations of the non-methane or methane mines with the „a”, „b” or „c” methane hazard grade or the „A” or „B” coal-dust explosion hazard class. The structure was developed according to requirements of the Directive 94/9/WE (ATEX).

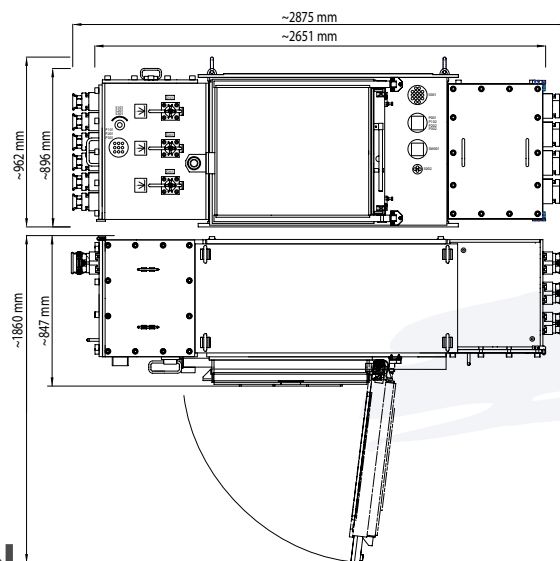
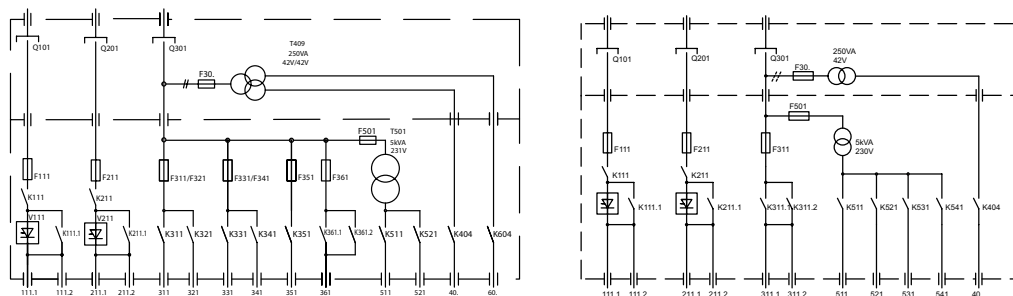
1. The flame-proof SCR starter is assigned for control of the start-up process of the asynchronous squirrelcagemotors used in the mining machine & device driving systems (relates to the lines no. 1, 2) and for the reverse system supply of the devices with the 230V rated voltage (relates to the line no. 3). Applied power protections

and adopted system for control & co-operation with technological interlocks using spark-safe circuits ensure safe co-operation with supplied mining devices and/or machines. The starter is foreseen for application inside the 1100 rated voltage installations with insulated neutral point of the supplying transformer. The starter is equipped with one lines with manually driven breaker switches. 2. The flame-proof starter unit of the is assigned for connection and control of electric mining machine and device drives. Applied electric-power protections and adopted system of control & co-operation with technological interlocks using spark-safe circuits ensure safe co-operation with supplied mining devices and/or machines. The set is assigned for installations with rated voltages of 1000V or 500V with insulated supplying transformer neutral point. The flame-proof starter unit is equipped with one lines with disconnecting switches operated manually.

EXAMPLARY CONFIGURATIONS EH-d03-W...



EXAMPLARY CONFIGURATIONS EH-d03-R...



FAMUR
ELGÓR+HANSEN

— Safety and Power

ul. Opolska 19, 41-500 Chorzów
tel. +48 32 249 94 80, tel./fax +48 32 241 34 57
www.elgorhansen.com